



Appendix

1. Specimen I.D: M61-200700191
2. Test method:
 - 2.1 Test strains: *Escherichia coli*, ATCC 8739.
 - 2.2 Test condition: $25 \pm 2^{\circ}\text{C}$ for 90 seconds.
 - 2.3 Culture condition: $35 \pm 2^{\circ}\text{C}$ for 48 ± 2 hours.
 - 2.4 Reference: refer to JIS Z2801:2012.
 - 2.5 Grouping:
 - 2.5.1 Test group: Test substances provided by customers.
 - 2.5.2 Control group: Non-antibacterial and non-bactericidal test piece (No light treatment).
 - 2.6 Prepare the suspension of test bacteria, and the concentration is around $10^5 \sim 10^6$ CFU/mL.
 - 2.7 Add 0.4 mL of bacteria suspension to test and control group.
 - 2.8 The test group placed in the test substance and operate 90 seconds.
 - 2.9 Incubate control group at $25 \pm 2^{\circ}\text{C}$ for 90 seconds (The control group does not illuminate the light source).
 - 2.10 The test and control group were conducted for 10-fold serial dilution with sterile 9.6 mL saline.
 - 2.11 After serial dilution, each group was inoculated on appropriate medium. The medium was cultured under the test condition. The growth was observed and colony counts were recorded.
 - 2.12 Calculation:

$$\text{Reduction rate (\%)} = \frac{(\text{Control group} - \text{Test group})}{\text{Control group}} \times 100\%$$



Appendix

3. Result:



Figure 1: Test article.

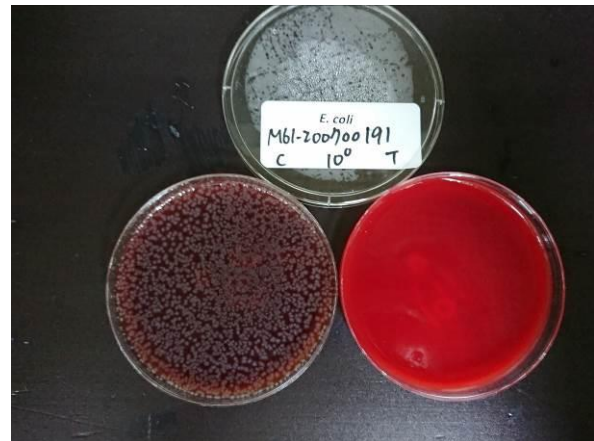


Figure 2: Result of control and test group against *E. coli* for 90 seconds

Table 1. Result of test article (M61-200700191) against *E. coli* for 90 seconds.

Test strain	Inoculated concentration (CFU/mL)	The residual amount of bacteria (CFU/mL)		Rate (%)
		Control group	Test group	
<i>E. coli</i>	3.8×10^5	2.7×10^4	<5	>99.999