

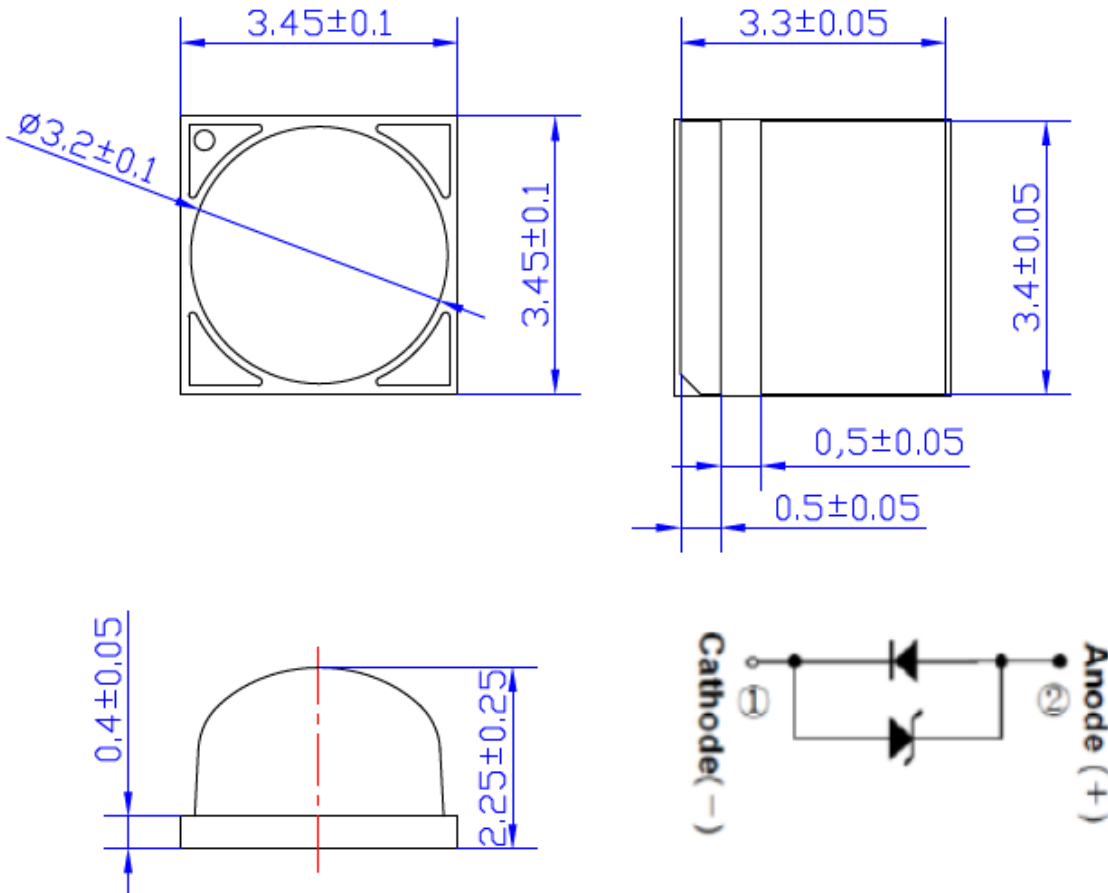


SHARLIGHT ELECTRONICS CO., LTD.

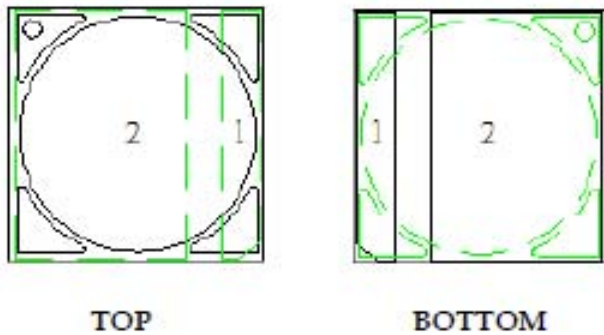
SPECIFICATION FOR APPROVAL

Part No. : SLE-3535NP4G-1WH-JZ

Package Dimensions



Pad Configuration



| PAD | Function |
|-----|----------------|
| 1 | Cathode |
| 2 | Anode, Thermal |

| | | | |
|---------------------|---|-------------|----------------|
| Part NO. | - | Lens Color | Emission Color |
| SLE-3535NP4G-1WH-JZ | - | Water Clear | UVC |

Notes

- All dimensions are in millimeters
- Tolerance is ± 0.25 mm
- Please don't put conductive material on the top surface of LEDs.**

LISTER : 周素華 08-06-20

EDITOR : 08-06-20

DATE : 08-06-20

REV : A



SHARLIGHT ELECTRONICS CO., LTD.

SPECIFICATION FOR APPROVAL

Part No. : SLE-3535NP4G-1WH-JZ

| Features | Applications |
|--|--|
| <ol style="list-style-type: none"> 1. Deep Ultraviolet LED 2. Dimension : 3.45mm(L)×3.45mm(W) 3. All Metal Design Cu Substrate 4. View Angle 100° 5. Low thermal resistance | <ol style="list-style-type: none"> 1. Disinfection 2. Chemical and Biological analysis |

Absolute Maximum Ratings at TA=25°C

| Parameter | Maximum Rating | Unit |
|------------------------|---------------------|------|
| Power Dissipation | 1 | W |
| Max DC Forward Current | 100 | mA |
| Operating Temperature | -40°C to + 60°C | |
| Storage Temperature | -40°C to + 100°C | |
| Soldering Condition | 260°C For 5 Seconds | |

Notes :

1. The thermal resistance value is measured with MCPCB (Star).

Electrical / Optical Characteristics at TA=25°C

| Parameter | Symbol | Min. | Typ. | Max. | Unit | Test Condition |
|----------------------------------|----------------------|------|------|------|--------------------|----------------|
| Radiant Flux | Φ _e | 5.0 | 9.0 | | mW | IF =100mA |
| Forward Voltage | V _F | | 7.0 | 10.0 | V | IF =100mA |
| Radiant Irradiance | E _e | | 3.0 | | mW/cm ² | IF =100mA |
| Peak Emission Wav length | λ _P | 265 | - | 278 | nm | IF =100mA |
| Spectrum Half Width | Δλ | | 15 | | nm | IF =100mA |
| Viewing Angle | 2θ _{1/2} | | 100 | | deg | IF =100mA |
| Thermal Resistance Junction-Case | R _{th,J-C1} | | | 15 | °C/W | IF =100mA |

Notes :

1. Forward voltage measurement allowance is ± 0.2V.
2. Radiant flux measurement allowance is ± 10%.
3. Irradiance tested at a distance 10mm from lens top.
4. Wavelength measurement allowance is ± 3nm.

| | | | |
|-----------------------|-------------------|-----------------|---------|
| LISTER : 周素華 08-06-20 | EDITOR : 08-06-20 | DATE : 08-06-20 | REV : A |
|-----------------------|-------------------|-----------------|---------|



SHARLIGHT ELECTRONICS CO., LTD.

SPECIFICATION FOR APPROVAL

Part No. : SLE-3535NP4G-1WH-JZ

● **Bin Code List for Reference**

(T_j=25°C)

| Item | Bin code | Symbol | Condition | Min. | Max. | Unit |
|------------------------------|----------|----------------|--------------------------|------|------|------|
| Forward Voltage ¹ | E | V _F | I _F =100 [mA] | 5 | 6 | V |
| | F | | | 6 | 7 | |
| | G | | | 7 | 8 | |
| | H | | | 8 | 9 | |
| | J | | | 9 | 10 | |
| Radiant Flux ² | A50 | Φ _e | I _F =100 [mA] | 5 | 8 | mW |
| | A80 | | | 8 | 12 | |

Bin Rank : V_F-Φ_e

Note

1. Forward voltage measurement allowance is ± 0.2V.
2. Radiant flux measurement allowance is ± 10%.

Recommended Solder Pattern

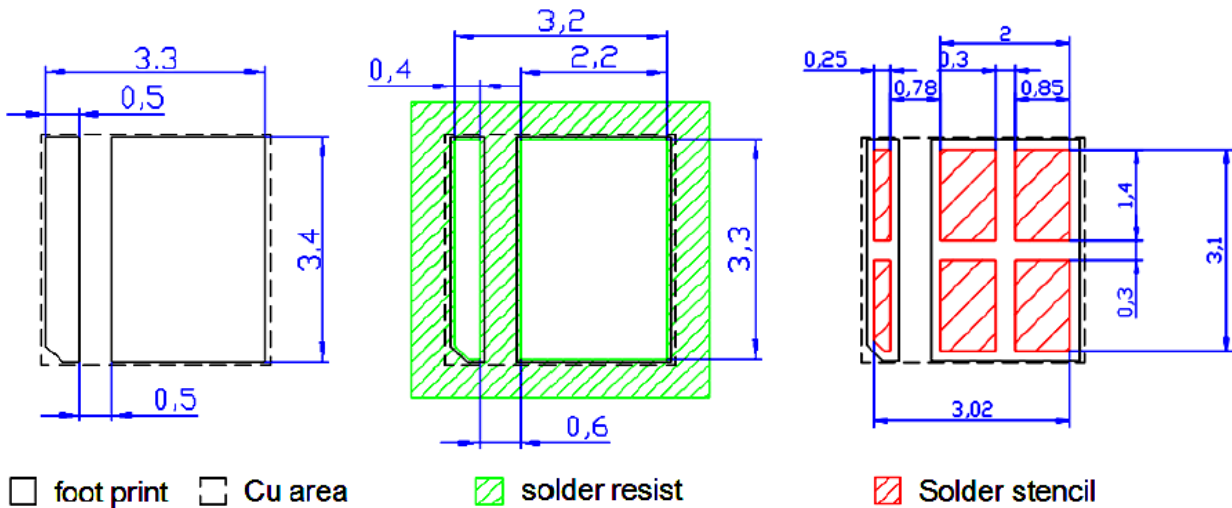


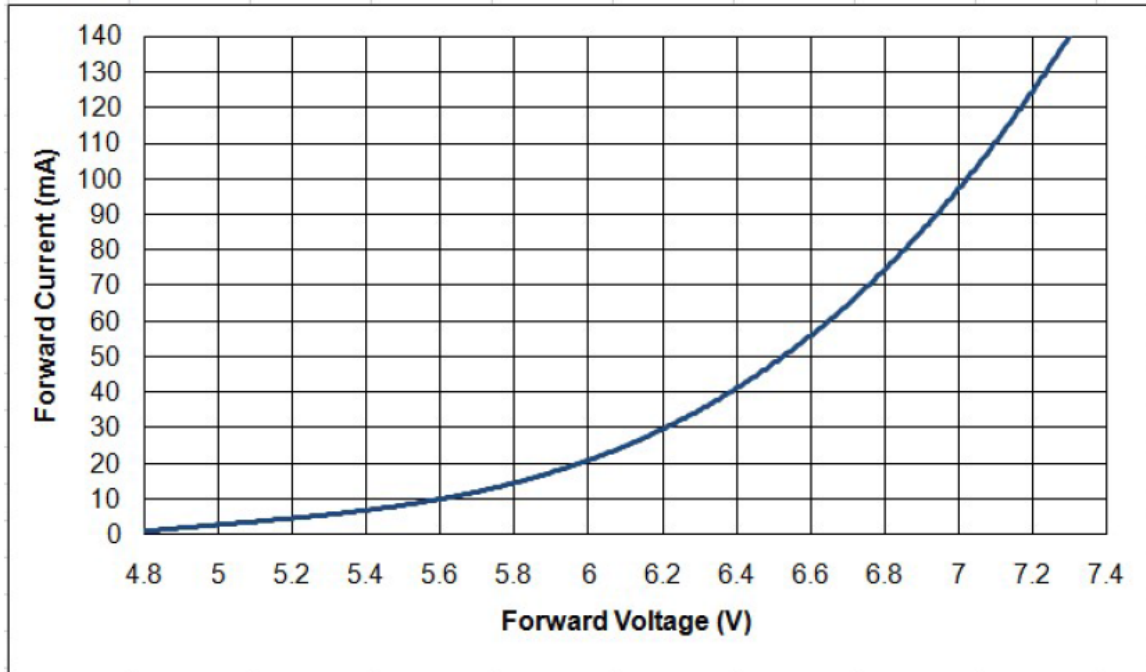
Fig. Solder Pad Layout.



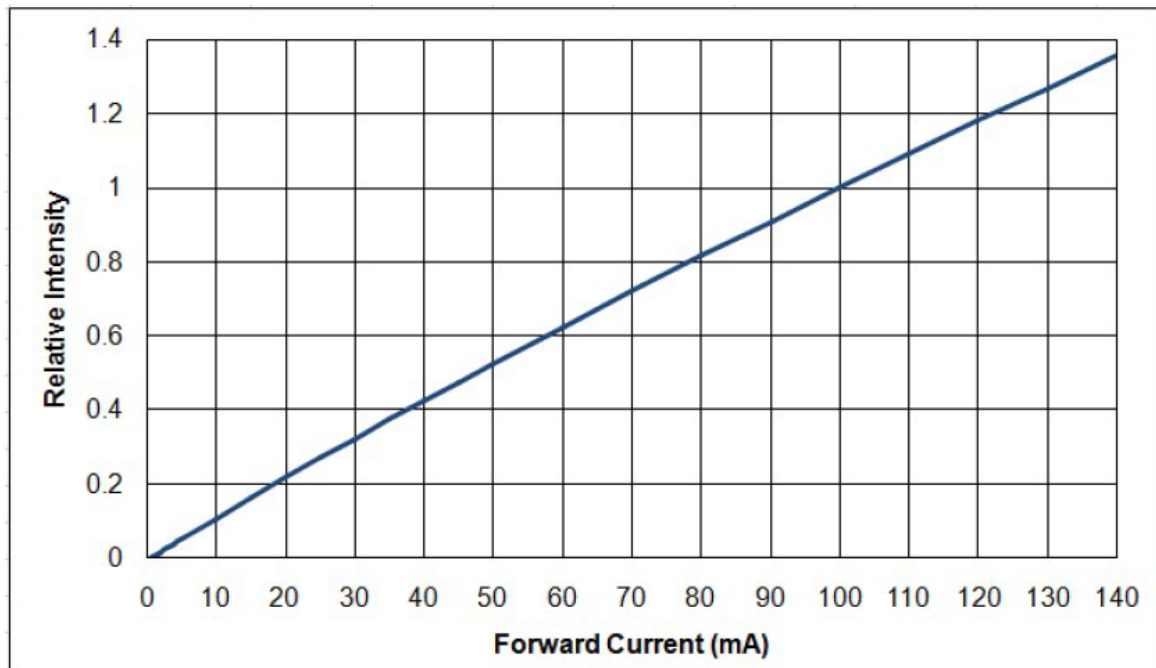
Part No. : SLE-3535NP4G-1WH-JZ

Characteristic Diagram

- Forward Current vs. Forward Voltage



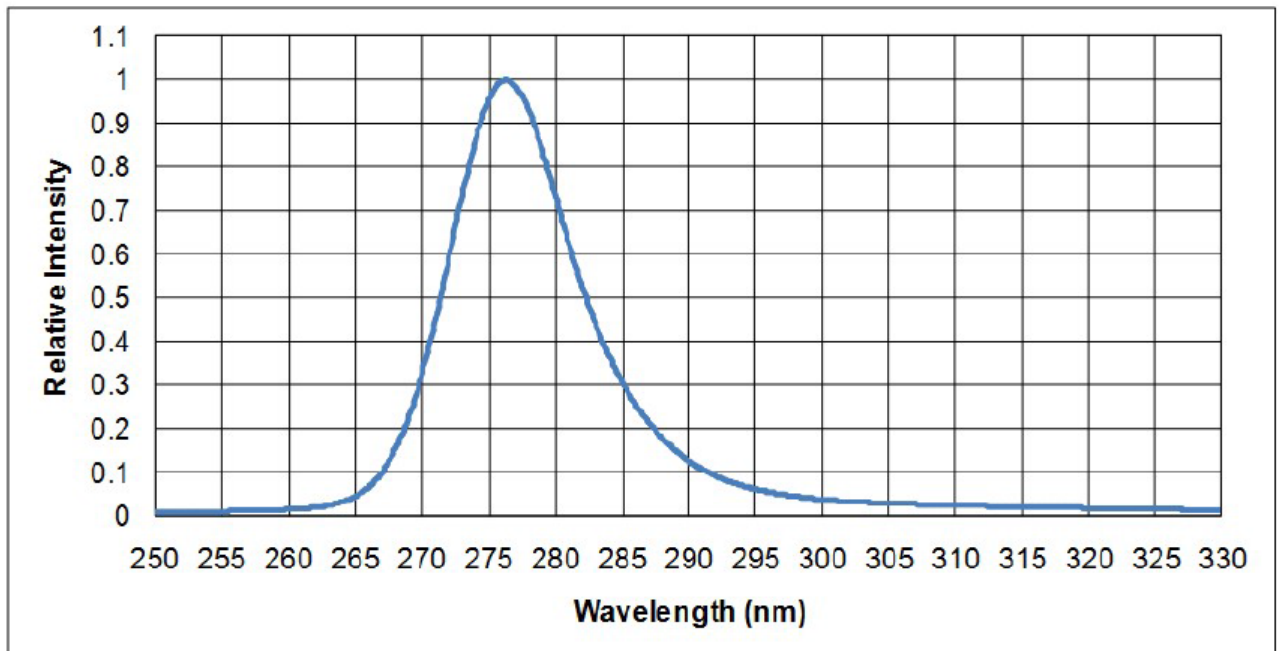
- Relative Intensity vs. Forward Current



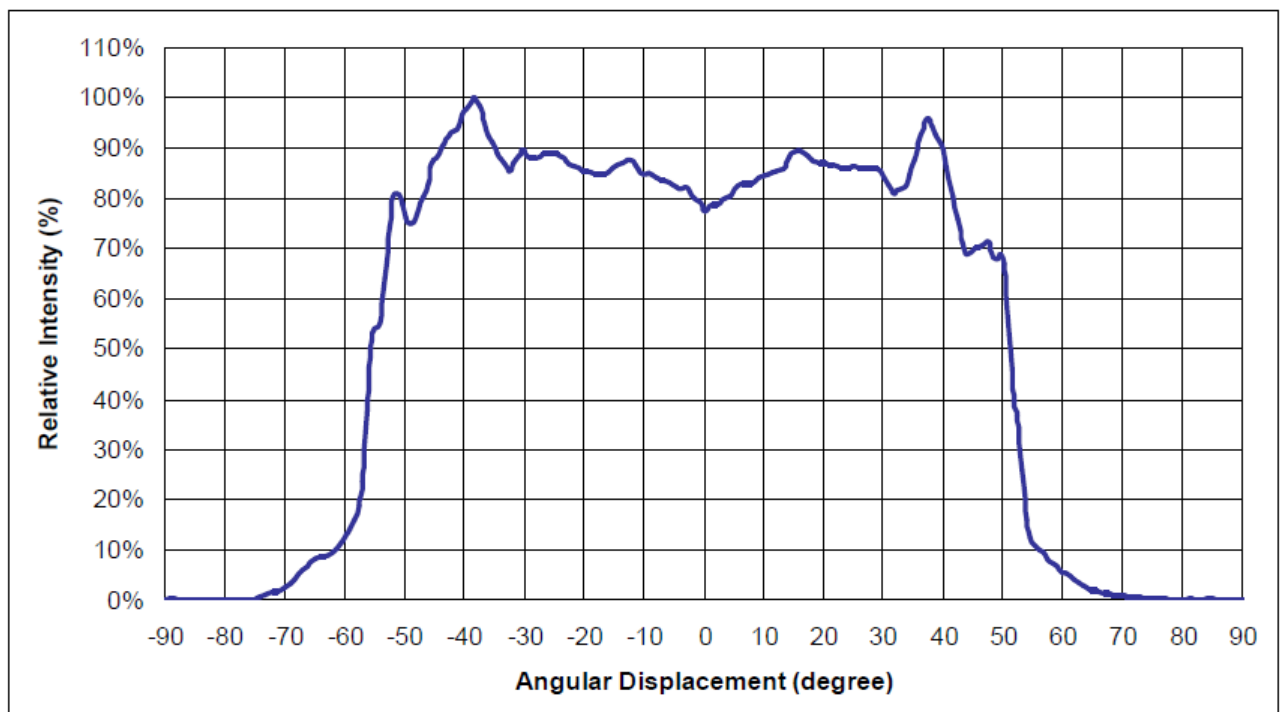


Part No. : SLE-3535NP4G-1WH-JZ

● **Spectral Power Distribution**



● **Typical Radiation Pattern**

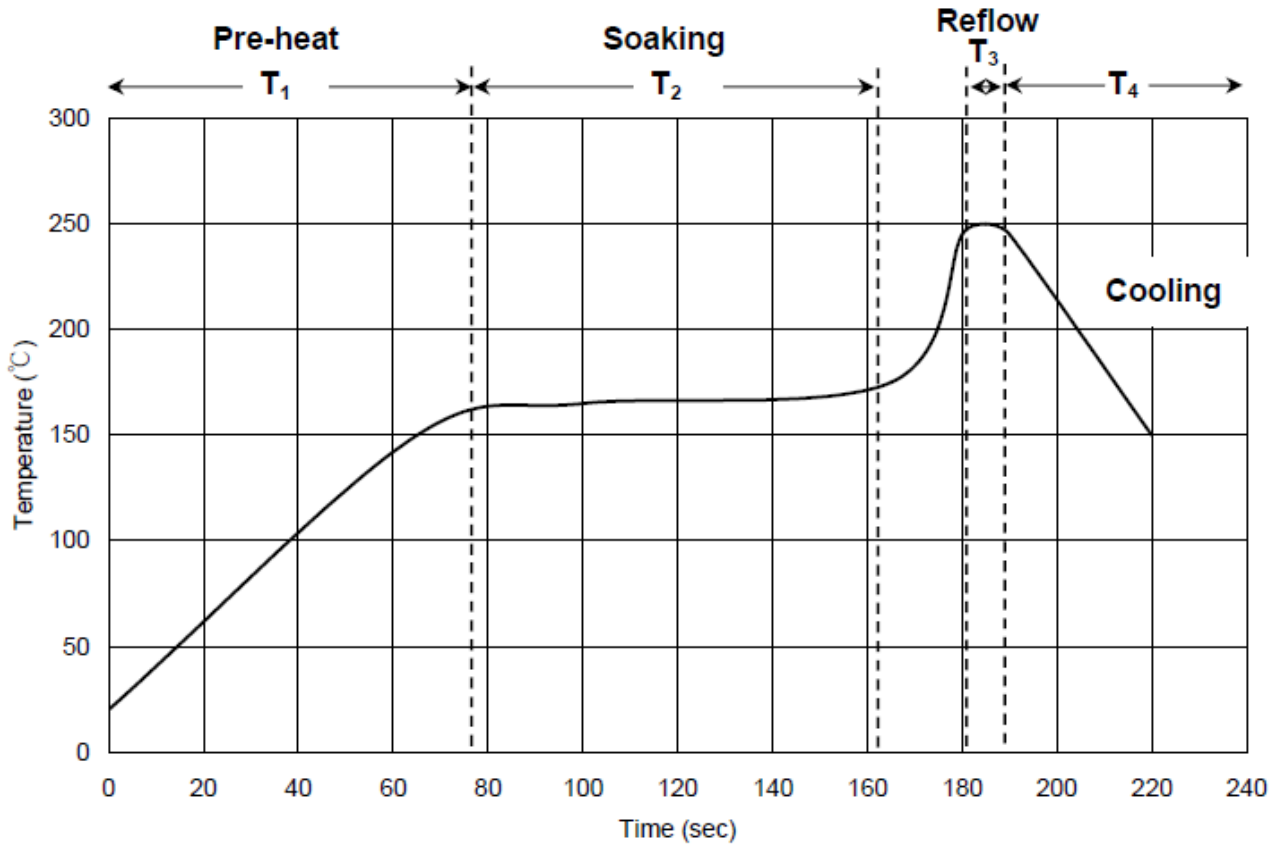




Part No. : SLE-3535NP4G-1WH-JZ

Recommended Solder Profile

Soldering Recommended soldering conditions:



| | | |
|----------------|----------------------------|------------------|
| T ₁ | Ramp up rate | 1.0 ~ 3.0 °C/sec |
| | Pre-heat time | 50 ~ 80 sec |
| T ₂ | Soaking temperature | 155 ~ 185 °C |
| | Dwell time during soaking | 60 ~ 120 sec |
| T ₃ | Reflow temperature | 240 ~ 250 °C |
| | Reflow time | Max 10 sec |
| | Ramp up rate during reflow | 1.2 ~ 2.3 °C/sec |
| T ₄ | Cooling | 1.0 ~ 6.0 °C/sec |

Note: Suggest using Sn96Ag3Cu0.5 lead free solder.

Cleaning

Use alcohol-based cleaning solvents such as isopropyl alcohol to clean the LED if necessary.



SHARLIGHT ELECTRONICS CO., LTD.

SPECIFICATION FOR APPROVAL

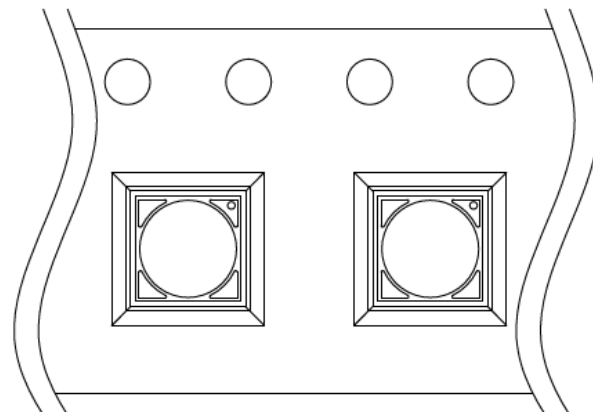
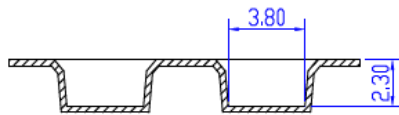
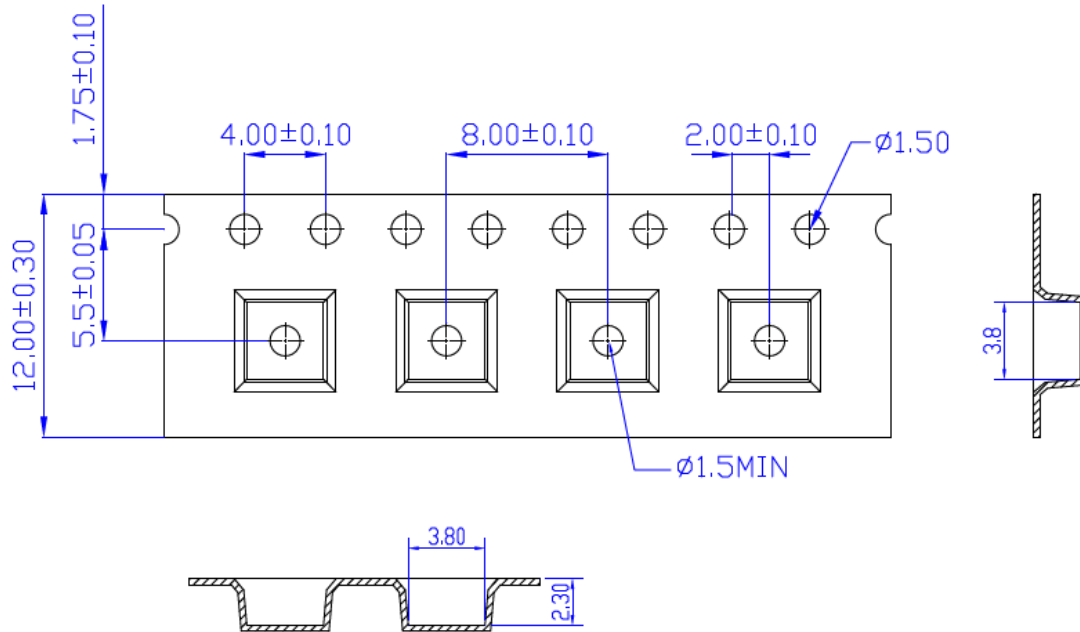
Part No. : SLE-3535NP4G-1WH-JZ

Shipping Package Style

Tapping Dimension Packaging Specification

- Moisture proof bag.
- 1 Reel/bag.
- Q'ty: 700(MAX)/Reel

Unit : mm



LISTER : 周素華 08-06-20

EDITOR : 08-06-20

DATE : 08-06-20

REV : A



SHARLIGHT ELECTRONICS CO., LTD.

SPECIFICATION FOR APPROVAL

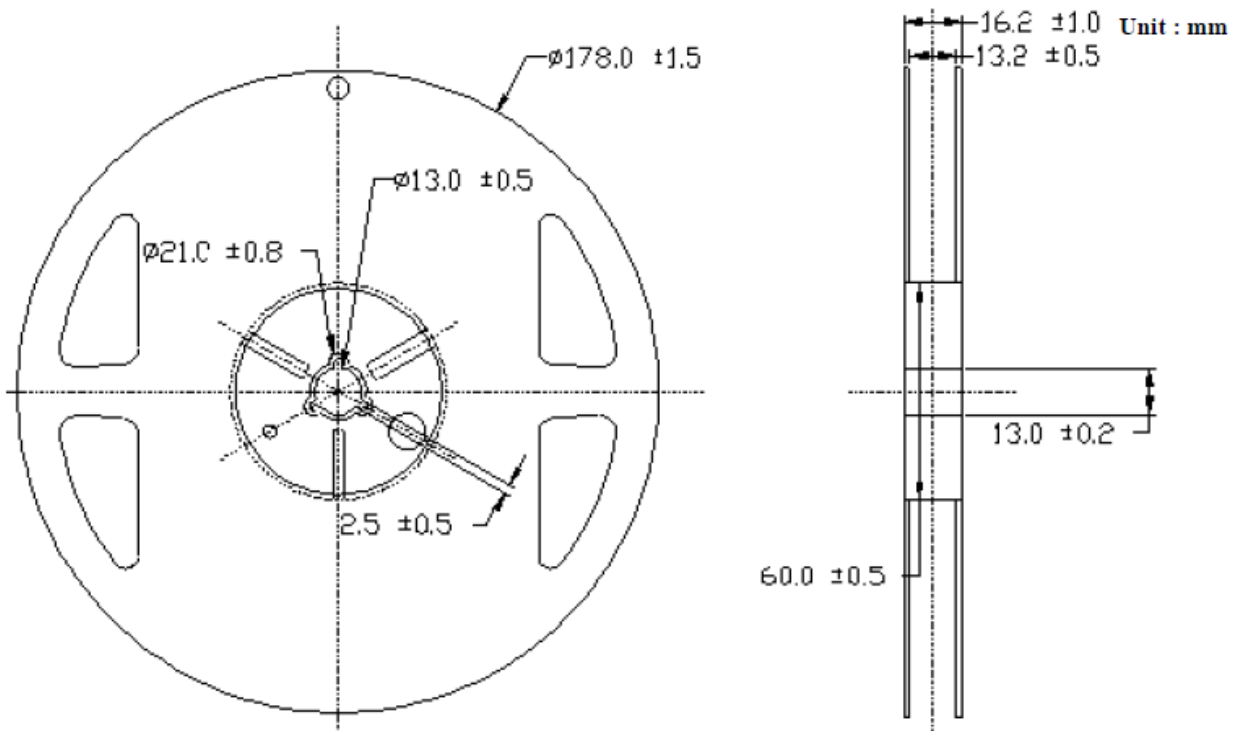
Part No. : SLE-3535NP4G-1WH-JZ

Package

| Box Type | Dimension (mm) | Reel/Box | 120° Lens Type(Pcs) |
|---------------|----------------|-------------|---------------------|
| Small Box(S) | 230x85x265 | 5 Reel/Box | 3500 |
| Middle Box(M) | 470x265x270 | 30 Reel/Box | 21000 |
| Large Box(L) | 470x435x270 | 50 Reel/Box | 35000 |

Reel Packaging :

Reel Part :



Do not poke the Led Lens with sharp object



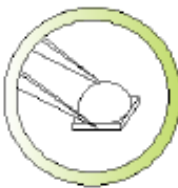
Do not stack assembled PCB



Do not hold the Led with hand



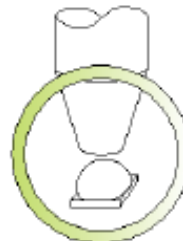
Do not press or push the Led Lens



Hold the Led only by the substrate



Clean the LED surface with cotton bud



Use pick and place nozzle per recommendation in data sheet